



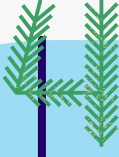
# CHRISTMAS

**1 GET READY**

## Foodbank Advent Calendar

**5**

Biscuits and crackers



Tinned items such as soup, custard, fruit, rice pudding

Shampoo, conditioner and soaps

**3**

Crisps, nuts or savoury snacks

**2**

**6**

Cans, pop, cordial

**7**

**Reminder!**

**Can you think of a nice treat to donate?**



Chocolate and hard boiled sweets



**10**



Pasta and rice

**15**

**ALMOST THERE!**



Condiments, cranberry sauce, ketchup, brown sauce

**15**

Bath bombs, shower gels and smellies

**12**

Instant hot chocolate

**11**

Gravy granules, stuffing mix

**16**

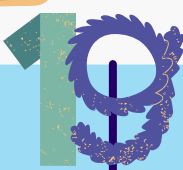
Tea, coffee and sugar, long life milk

**17**

Christmas pudding

**18**

**Delivery day!**



**20**



**Form with the most wins a prize in January!**

This year, we are collecting items to donate to the Stalybridge Foodbank in support of our local community. Use this advent calendar for inspiration on what to collect. Christmas themed treats are great too (think selection boxes, mince pies etc).