



A Guide to your son's

Year 11 Assessment Report at West Hill School

Projected Grade

The Projected Grade is an indication of the GCSE grade that your son may achieve if he continues to work as he is.

Key Stage 4 (KS4) Target

To help you measure how well your son is doing, he is set an aspirational target for the end of Year 11. Boys may not always reach their target but the expectation is that they aim high and work hard towards it.

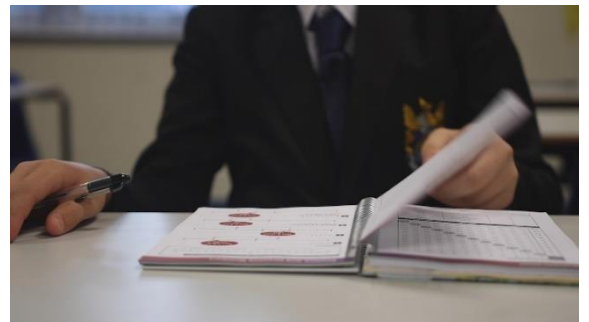
National Reporting of Grades

GCSEs are graded 1 – 9, with 9 being the highest grade.

Cambridge Nationals (Sports Studies) and Technical Awards (Business Enterprise) are graded at Level 1 Pass - Level 2 Dist*, with Level 2 Dist* being the highest.

More information on the grading system can be found at:

<https://ofqual.blog.gov.uk/2018/03/02/gcse-9-to-1-grades-a-brief-guide-for-parents/>



Learning Habits and Aim High Habits

Learning Habits are set by each department and are formed on criteria essential to successful learning in each given subject.

Aim High habits involve taking initiative, for example reading around the subject and learning at home in addition to the tasks set by teachers.