



A Guide to your son's

Year 10 Assessment Report at West Hill School

Projected Grade

The Projected Grade is an indication of the GCSE grade that your son may achieve if he continues to work as he is.

KS4 Target

To help you measure how well your son is doing, he is set an aspirational target for the end of Year 11. Boys may not always reach their target but the expectation is that they aim high and work hard towards it.

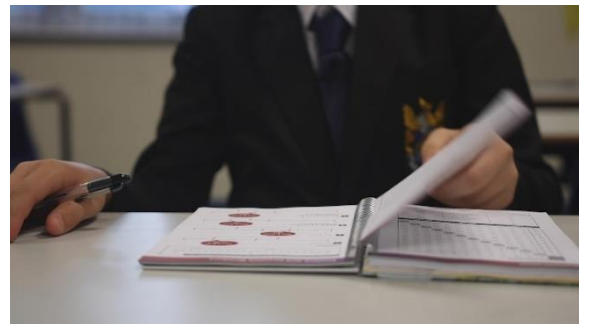
National Reporting of Grades

GCSEs are graded 1 – 9, with 9 being the highest grade.

Cambridge Nationals (Sports Studies) and Technical Awards (Business Enterprise) are graded at Level 1 Pass - Level 2 Dist*, with Level 2 Dist* being the highest.

More information on the grading system can be found at:

<https://ofqual.blog.gov.uk/2018/03/02/gcse-9-to-1-grades-a-brief-guide-for-parents/>



Attendance, Punctuality and Behaviour

This is a summary of some of the key data on attendance, punctuality, and key behaviours that may impact learning. A reminder that you can receive this information at any time using the School Gateway app.

Details of how to download the app can be found on the school website:

<https://www.westhillschool.co.uk/communication>

Learning Habits and Aim High Habits

Learning Habits are set by each department and are formed on criteria essential to successful learning in each given subject.

Aim High habits involve taking initiative, for example reading around the subject and learning at home in addition to the tasks set by teachers.



Next Steps

These suggest ways forward and are specific to each subject. For students who are making excellent progress this will often be to read around the subject or to look ahead to see what topics are coming up. You can find our curriculum maps on each subject page of the school website at <https://www.westhillschool.co.uk/subjects> The maps show the curriculum themes, skills that are being developed, key vocabulary and assessment focus areas. Parents can use this information to help support students and start conversations about areas of study.

Report Enquiries

If you have any questions about your son's report, please contact school by phoning the school reception office on 0161 338 2193, or alternatively, by emailing the school email address on admin@westhillschool.co.uk

For attendance, punctuality or behaviour enquiries, please contact Ms Corrigan – Head of Year 10.

For subject-specific enquiries, please contact your son's subject teacher.

For target ranges and general report enquiries, please contact Mr Butterworth – Deputy Headteacher: Quality of Education.